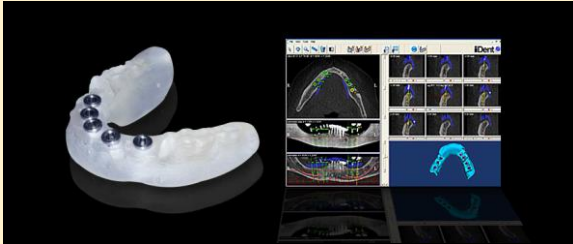


## Guided Implants

Southside Dental Options offers advanced dental implant placement by one of our highly skilled dentists, using Guided Implant Surgery technology. We use the most updated implant treatment planning software to virtually plan for implant position before the actual surgery. We utilize a computer-designed surgical guide for implant placement which results in a predictable, safe, efficient surgical procedure. Without this level of planning and technology, the patient might experience a larger surgical procedure than is necessary, and with less than ideal results.

Book an appointment today to discuss this procedure.



## What's Lurking in YOUR Toothbrush?

Did you know that you should replace your toothbrush after a cold, the flu, mouth infection, cold sores or a sore throat?

Bacteria will remain on your toothbrush which can lead to reinfection.

## OPENING HOURS

Monday 9am-7pm

Tuesday 9am-5pm

Wednesday 9am-5pm

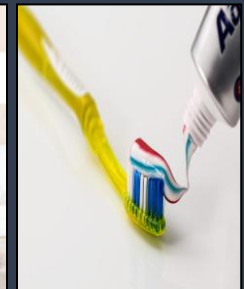
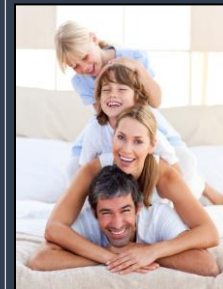
Thursday 9am-5pm

Friday 8am-3pm

Saturday appointments available



Our aim is Better Dental Health for you and your family through preventative Dentistry.



178 Main South Rd  
Morphett vale 5162  
8382 2436

[www.southsidedental.com.au](http://www.southsidedental.com.au)



# Something to SMILE about GAP FREE DENTAL CHECKUPS

20%off for non-health fund patients

\*\*conditions apply

## Have you booked in for your Active Maintenance Appointment?

Like a car or a beautiful garden, your mouth and teeth need constant maintenance to ensure it stays healthy. The bacteria that live inside your mouth are constantly producing acids and irritants that cause tooth decay and gum disease. Therefore, you need to be proactive with your dental hygiene. We like to call it your 6 monthly Active Maintenance appointment where we can check for any early signs of tooth decay and gum infection and initiate simple preventive care before the infection takes hold and becomes irreversible and your dentist needs to pick up the noisy drill.

Prevention is always better than cure and so the Dentists at Southside Dental Options encourage all our patients to come visit us on a regular basis, usually every 6 months. However, that may vary a little from patient to patient.

### **Crowded or Crooked teeth?**

\*We are offering FREE initial consultations for Orthodontics!

### **Baby Bottle Tooth Decay:**

Even though they are temporary, your child's baby teeth are important, and are still susceptible to cavities. Tooth decay in infants and toddlers is often referred to as Baby Bottle Tooth Decay, or Early Childhood Caries. Children need strong, healthy teeth to chew their food, speak and have a good-looking smile. Their first teeth also help make sure their adult teeth come in correctly. It's important to start infants off with good oral care to help protect their teeth for decades to come.

## Our Team is expanding:

New Seasons bring new Changes...  
Such is the case for Southside Dental Options. We have expanded our fabulous team to include 2 new staff members.  
Hygienist Karen Kennedy and Trainee Dental Nurse Jemma.



You've worked hard for that Beautiful smile; keep it that way!

Finally, your braces have been removed and your smile is beautiful and straight. However, your orthodontic treatment isn't quite completed. To keep your smile looking its best, you'll have to wear a retainer to preserve and stabilize your results. Retainers are needed to control or limit potential changes in tooth position. They are used after braces to hold teeth in their correct position while the surrounding gums, bone and muscle adjust to the new positioning of your teeth.

We recommend wearing removable retainers full time for 12 months then overnight. If retainers are not worn relapse may happen.

*Make your hard work worthwhile and wear your retainers.*

### A Little Girl

Congratulations to our nurse Lisa and husband Shaun on the arrival of their beautiful daughter Grace.

### It's a BOY!

Congratulations to our Practice Manager Pam. She is now the Proud Nanna to baby Lukas.